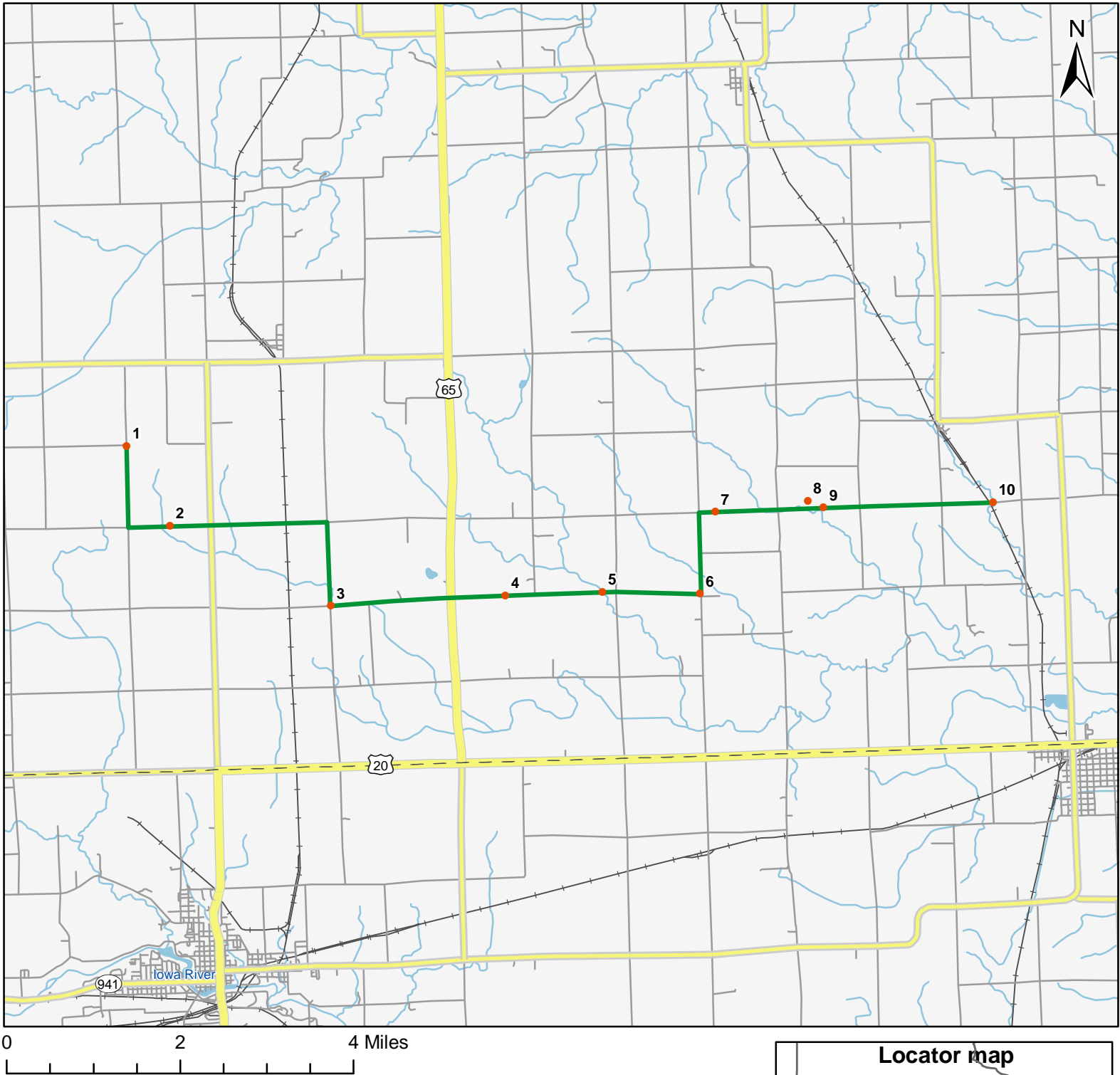


North American Amphibian Monitoring Program



Route: 360510 Faulkner, IA



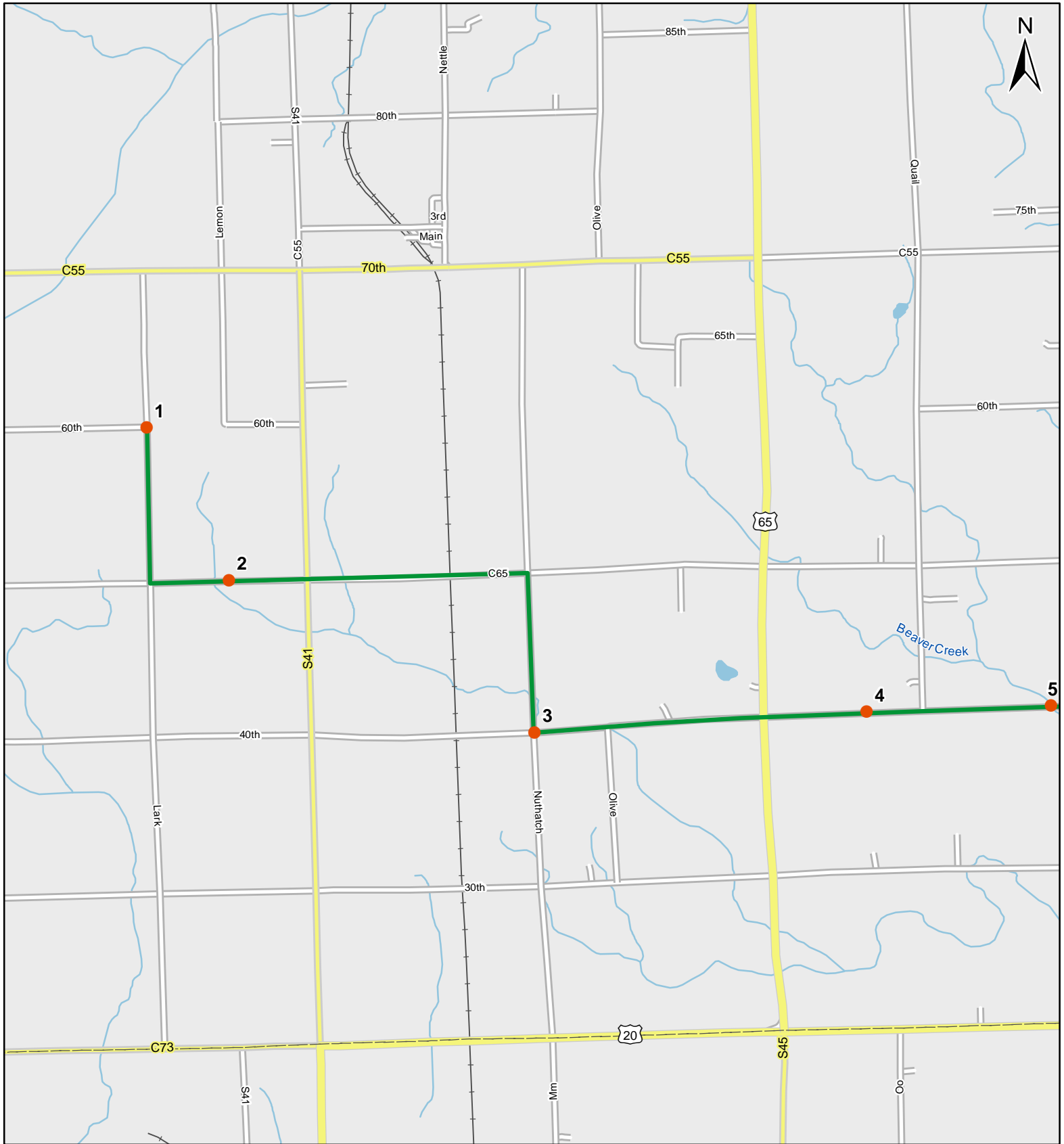
Legend

- Stop Locations
- Route Path



For more information, please visit the NAAMP website:
<http://www.pwrc.usgs.gov/naamp/>

Route: 360510 Faulkner, IA



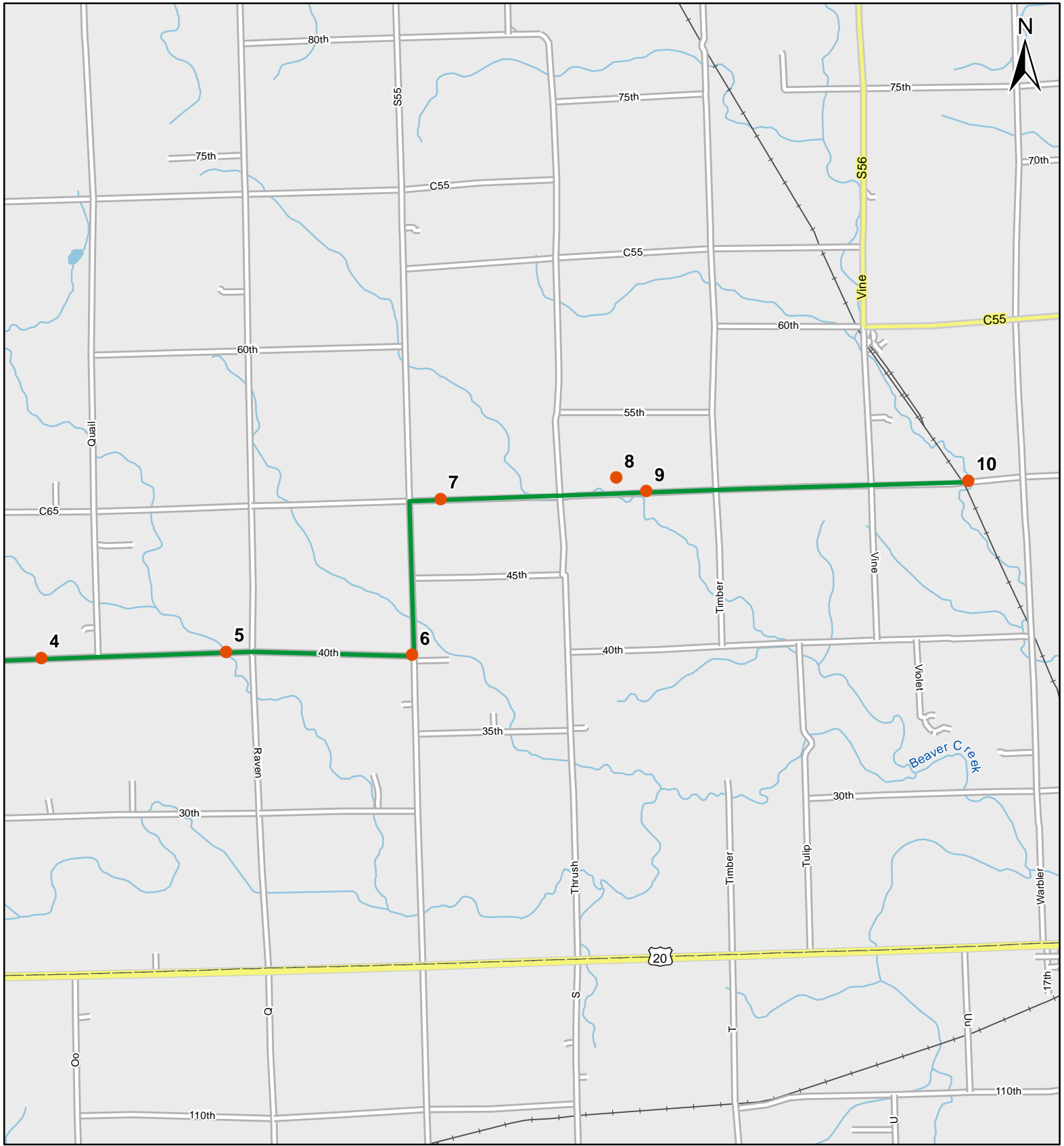
0 1 Miles

1:50,000

Legend

- Stop Locations
- Route Path

Route: 360510 Faulkner, IA



0 1 Miles

1:50,000

Legend

- Stop Locations
- Route Path



Frog and Toad Call Survey Route Description

Route ID **360510**

Established:

Site Number	Name	County	Latitude	Longitude	Directions
1	0	Franklin	42.6152992	-93.281601	Wet ditches on either side of the road.
2	1.4	Franklin	42.6007996	-93.2717972	Large, wet drainage culverts on either side of the road.
3	4.4	Franklin	42.585701	-93.2337036	small creek running across the road. Park after bridge.
4	6.5	Franklin	42.5866013	-93.191597	Wet ditches on either side of the road.
5	7.7	Franklin	42.5866013	-93.1681976	Large stream running perpendicular to the road. Park after the bridge.
6	8.9	Franklin	42.585701	-93.1445999	Wet ditches on either side of the road.
7	10.1	Franklin	42.6002007	-93.1402969	Wet drainage culvert on the south side of the road.
8	10.7	Franklin	42.6001015	-93.1281967	A stream crosses the road and curves east. Park after the small bridge.
9	11.4	Franklin	42.6002998	-93.1141968	A small creek crosses the road.
10	13.5	Franklin	42.6002998	-93.0734024	A small river crosses the road. Park after the bridge